

ESSENTIALS



After Glow South Pacific Desert Jewel
Spiced Berry Simply Chic Earthy Rose Paparazzi Parisian Nights

All eight shades of Grafton Cosmetics' new **Mineral Lip Xtreme** formulas are enriched with natural plumping extracts such as wintergreen, peppermint and spearmint to give your clients' kissers a colorful boost. **800.662.5387, graftoncosmetics.com**

Hand-hammered **copper bowls** from Pedicure Bowls conduct heat to keep clients' feet comfortably warm during foot soaks and deluxe treatments. The bowls are large enough to accommodate men's size-13 feet. **800.772.1408, pedicurebowls.com**



Applied to the face and/or body and left to dry, the beeswax-based **Vegetable Skin Peeling** from Skin Care Consultants formula preps the dermis so that ampoules, creams and wraps can fully penetrate. **877.694.9777, lamskin.com**



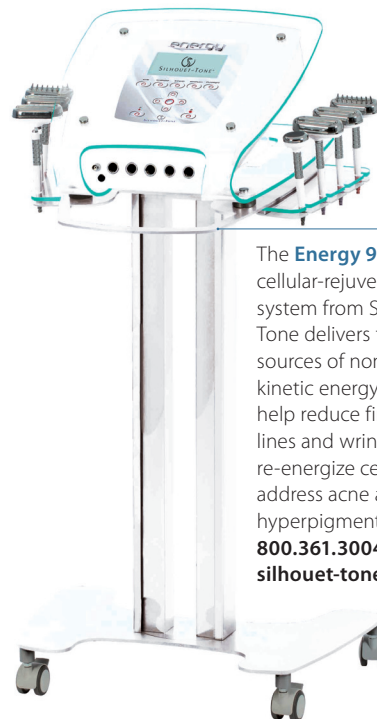
Give clients a luminous glow and smooth, even skin tone with **Red Carpet Colour** from Universal Companies. Available in three shades, this self-tanning formula's enriched with vitamins C and K to reduce the appearance of skin discoloration. **800.558.5571, universalcompanies.com**



Acetyl hexapeptide-3 and natural plant extracts in Keyano Aromatics antiaging **Eye Serum** hydrate the delicate skin around the eye. It also helps correct dark circles, puffiness and fine lines. **800.800.0313, keyano.com**



Natural fruit acids and sun filters combine in Yon-Ka **Ultra Protection**, a special moisturizer designed to accelerate cellular regeneration. **800.533.6276, yonkausa.com**



The **Energy 900** cellular-rejuvenation system from Silhouette-Tone delivers three sources of noninvasive kinetic energy to help reduce fine lines and wrinkles, re-energize cells, and address acne and hyperpigmentation. **800.361.3004, silhouette-tone.com**